

FAN & LIMIT CONTROLS

White Rodgers Fan & Limit Controls for  
Universal Replacement

Single element type for applications with narrow space limitations. Regulates fan or blower operation and acts as high limit safety control.

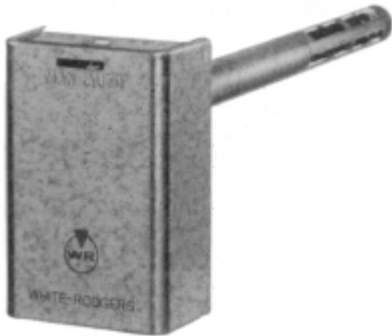
Features:

- Designed to be interchangeable with other flush mounted, single element fan and limits.
- Slotted mounting holes for easy installation.
- Long Terminal screws for wiring—Junctions can be made on terminal block.
- Limit switch has “universal” contact structure capable of handling millivolts to 240 VAC.
- Limit switch has adjustable stop to limit maximum setting—Shipped at 200° F (94° C).
- Dial has individual pointers for fan cut-in and cut-out settings.
- Removable solid copper jumper between fan and limit switches.
- Summer fan switch for ventilation without changing control settings. Has same fan and limit switch mechanism.
- C.S.A. Certified and U.L. Recognized.

Specifications and Cross Reference:

SOURCE 1 PART NO.	VENDOR TYPE NO.	ELEMENT LENGTH	DESCRIPTION	HONEYWELL
525-37311-000	5D51-35	5"	With standard enclosure	L4064B2228
525-37312-000	5D51-78	11"		L4064B2210
525-37313-000	5D51-90	8"		L4064B2236

VENDOR TYPE NO.	DESCRIPTION	RANGE	DIFFERENTIAL	SWITCH ACTION	FULL ELECTRICAL RATING	MOTOR RATING (FULL LOAD)		VALVES AND RELAYS	
						120 VAC	240 VAC	24 VAC	0.3-12v DC
5D51 Series	Fan	50 to 265° F (10 to 129° C)	Adjustable 15° F min- imum	Close on Rise	HT	14.0A	7.0A	—	—
	Limit	100 to 300° F (38 to 149° C)	Fixed 25° F	Open on Rise	HTV	10.0A	6.0A	6.0A	1.0A



525-37311-000

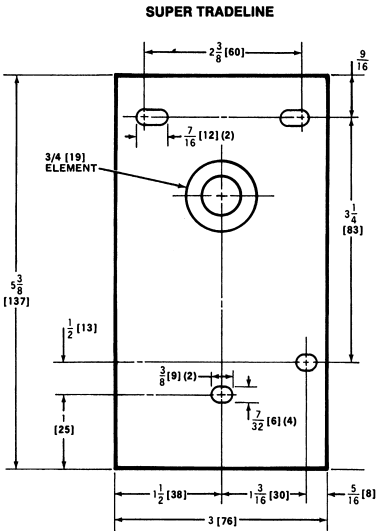
GAS HEATING CONTROLS

Honeywell L4064 Fan & Limit Controls



Features:

- Application: Turns fan ON and OFF according to plenum temperature with Helical Bimetal Sensing Element.
- Mounting - flush to panel.
- Installation instructions included.



ELECTRICAL RATINGS (A):

	120 VAC		240 VAC	
	FAN	LIMIT	FAN	LIMIT
Full Load	14	8	7	4
Locked Rotor	84	48	42	24

Pilot Duty: 2A at 24VAC; 0.25A at 0.25 to 12 Vdc.  
Max. Combined Connected Load: 2000VA.

TEMPERATURE RATINGS (A):

	L4064B	
	FAN	LIMIT
Scale Range	50 to 250	10 to 121
High Limit Range	100 to 250	38 to 121
High Limit Differential, Fixed	25	14
FAN-ON Setting Range	65 to 215	18 to 102
FAN-OFF Setting Range	50 to 200	10 to 96
Fan Differential, Adj.	22, min.	12, min.
Minimum Switch Temp.	-40	-40
Maximum Switch Temp.	190	88
Maximum Element Temp.	350	177

SOURCE 1 PART NO.	HONEYWELL PART NO.	ELEMENT LENGTH INCHES
025-25907-700	L4064A2790	5.125
025-25908-700	L4064A2808	8.125
025-25909-700	L4064A2816	11.625